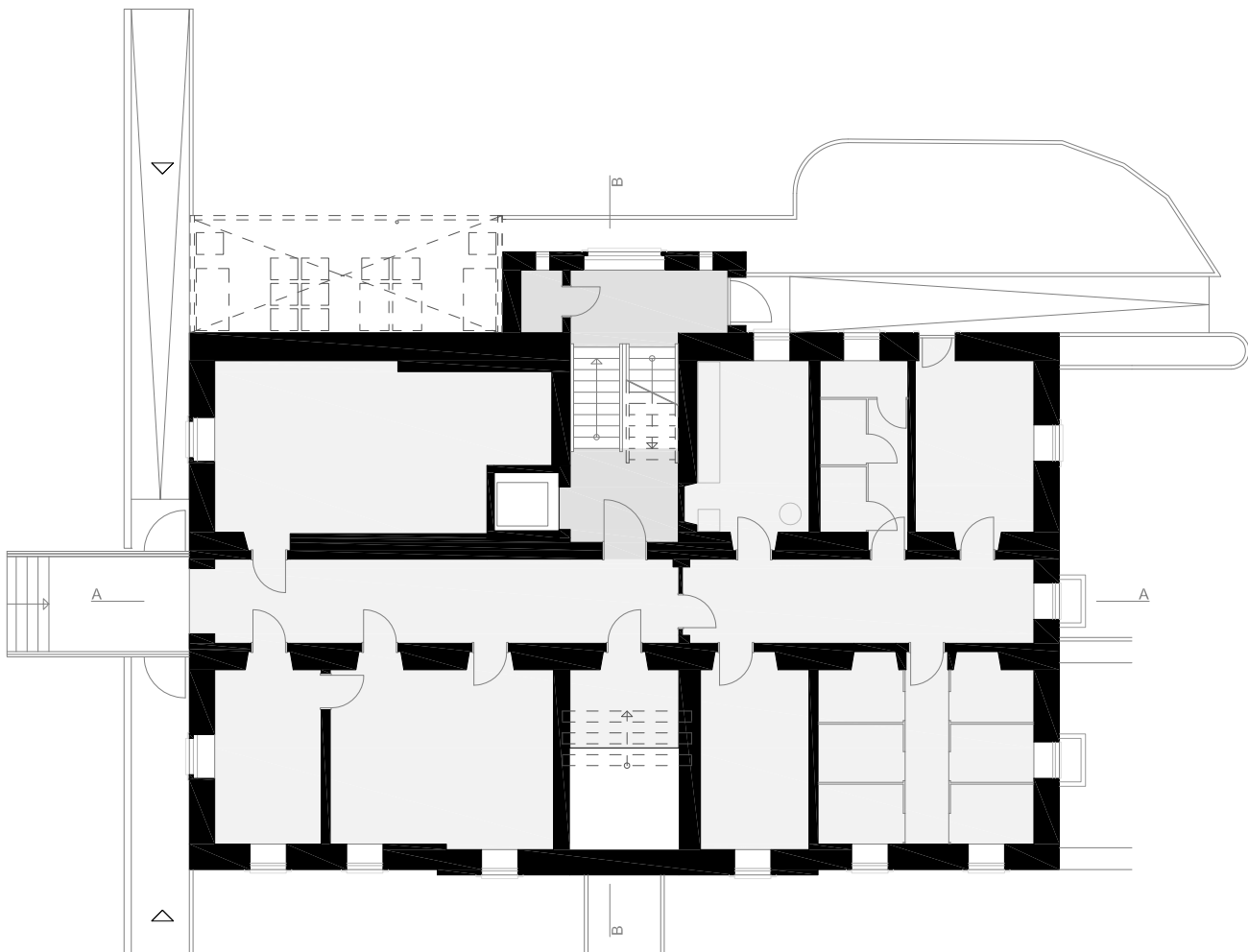


Lageplan

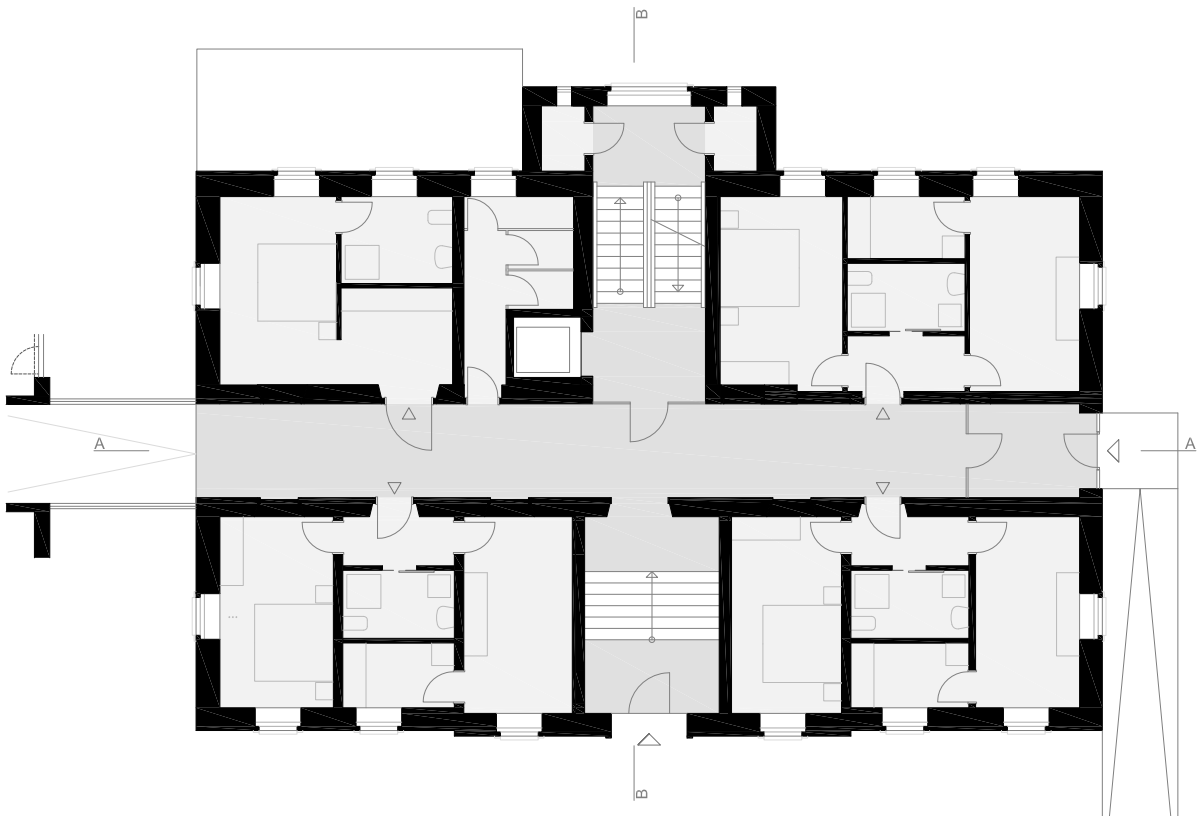


Erdgeschoß





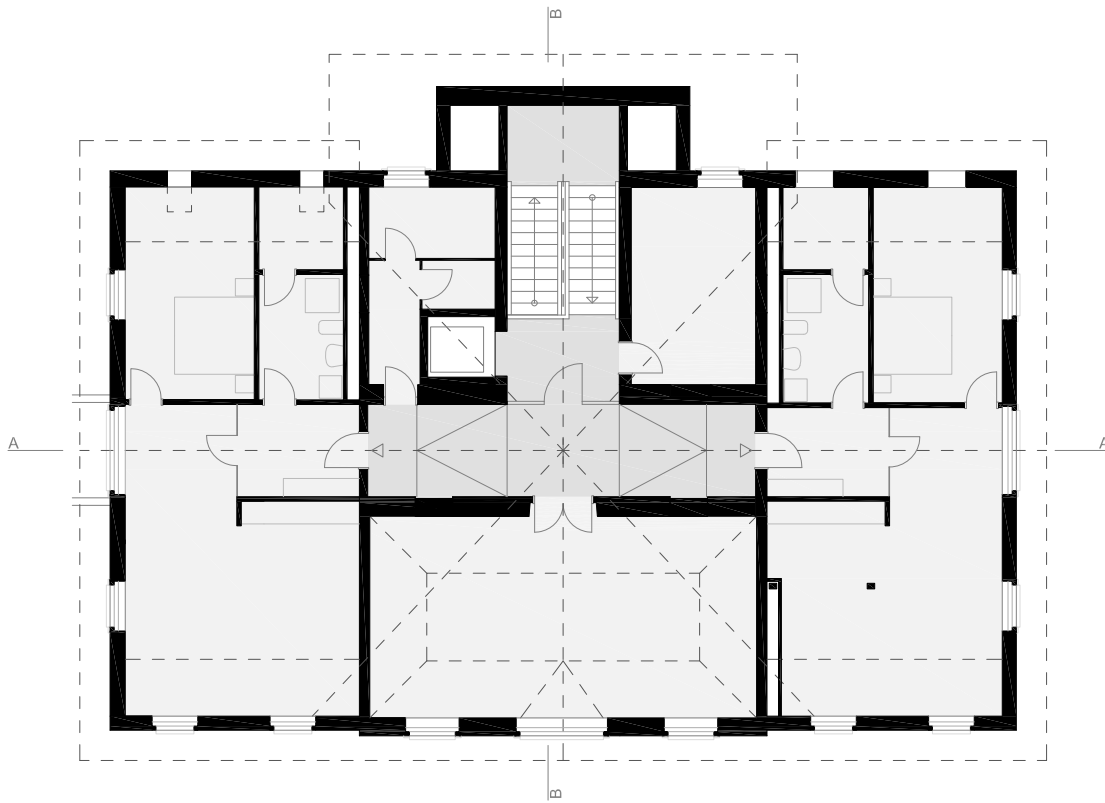
2. Obergeschoß



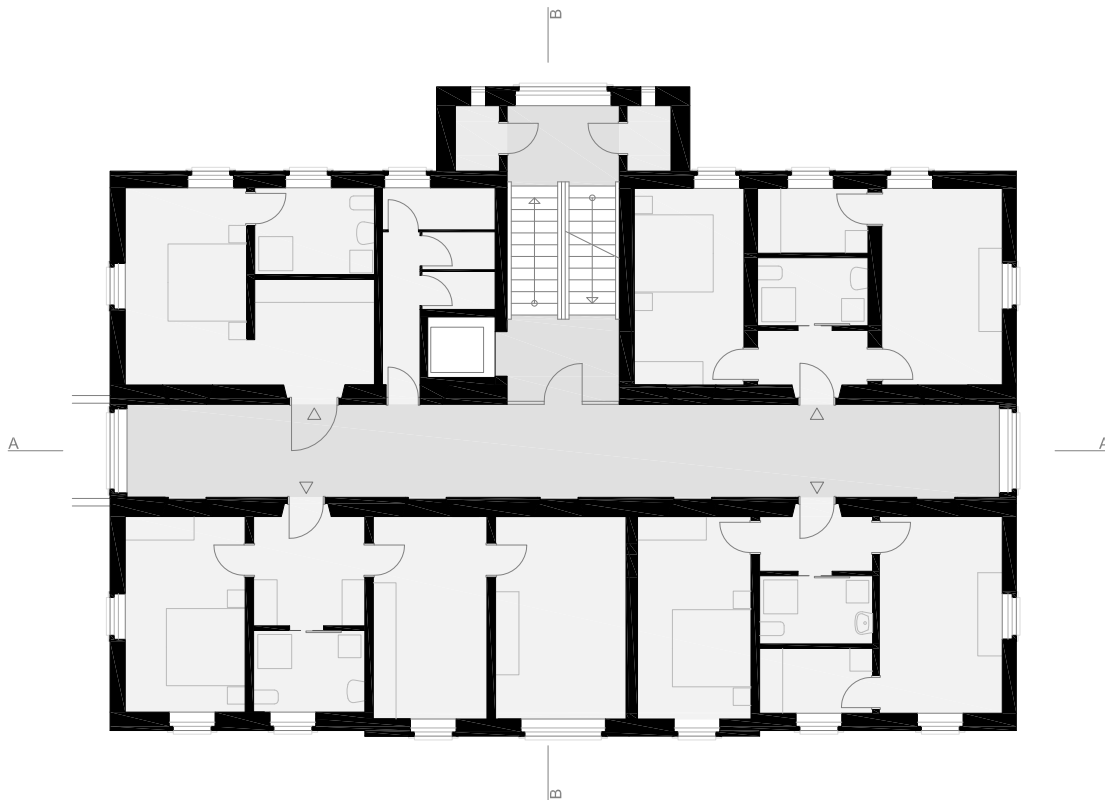
1. Obergeschoß



0 2 4 6 m



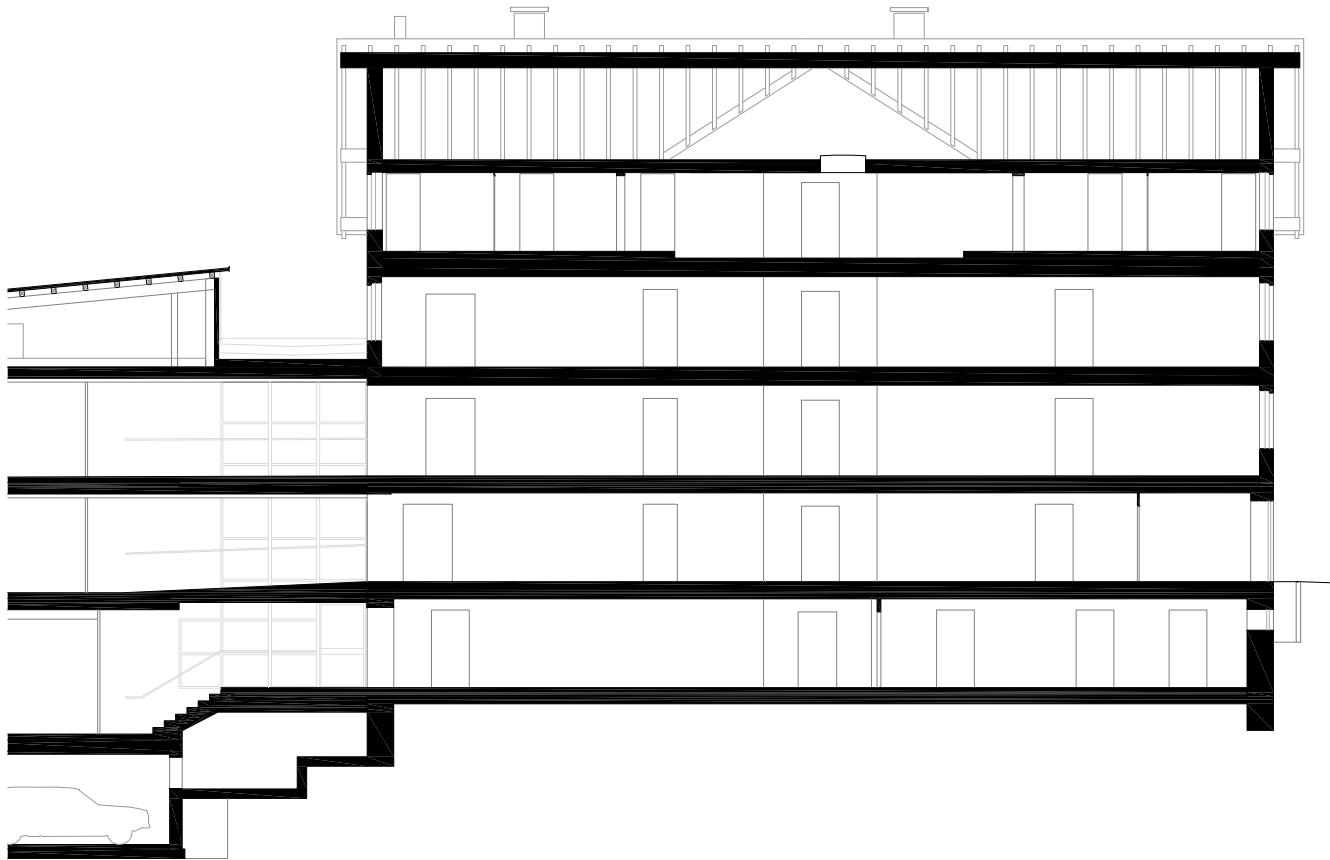
4. Obergeschoß



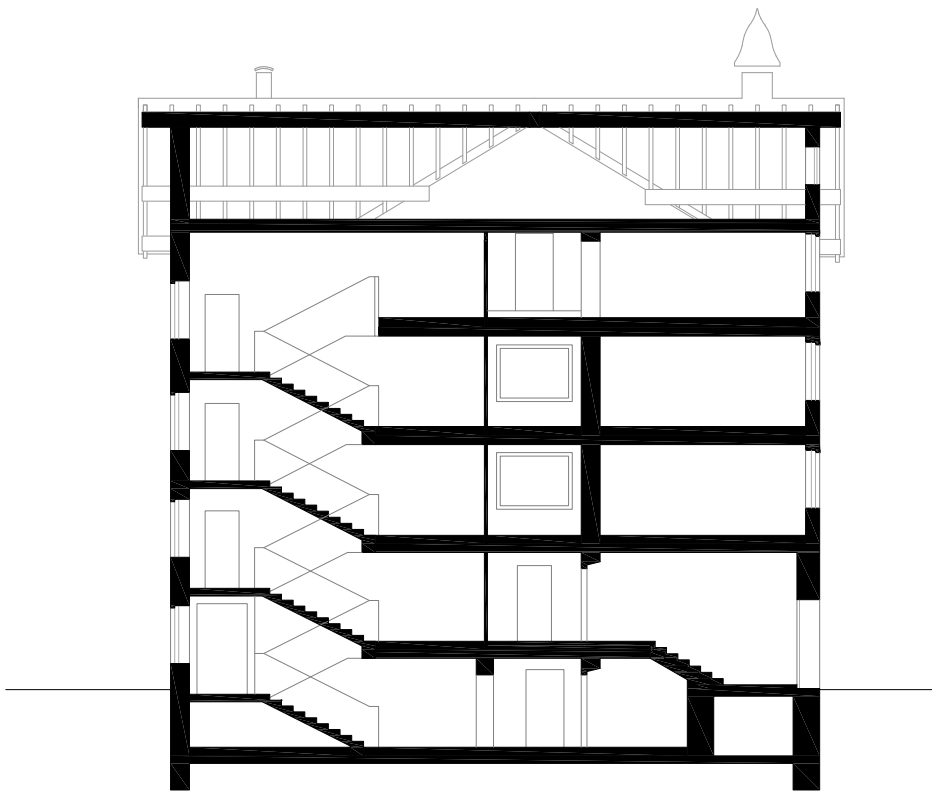
3. Obergeschoß



0 2 4 6 m



Schnitt A-A



Schnitt B-B

0 2 4 6 m



Ansicht Süd



Ansicht West





Ansicht Nord



Ansicht Ost

0 2 4 6 m