

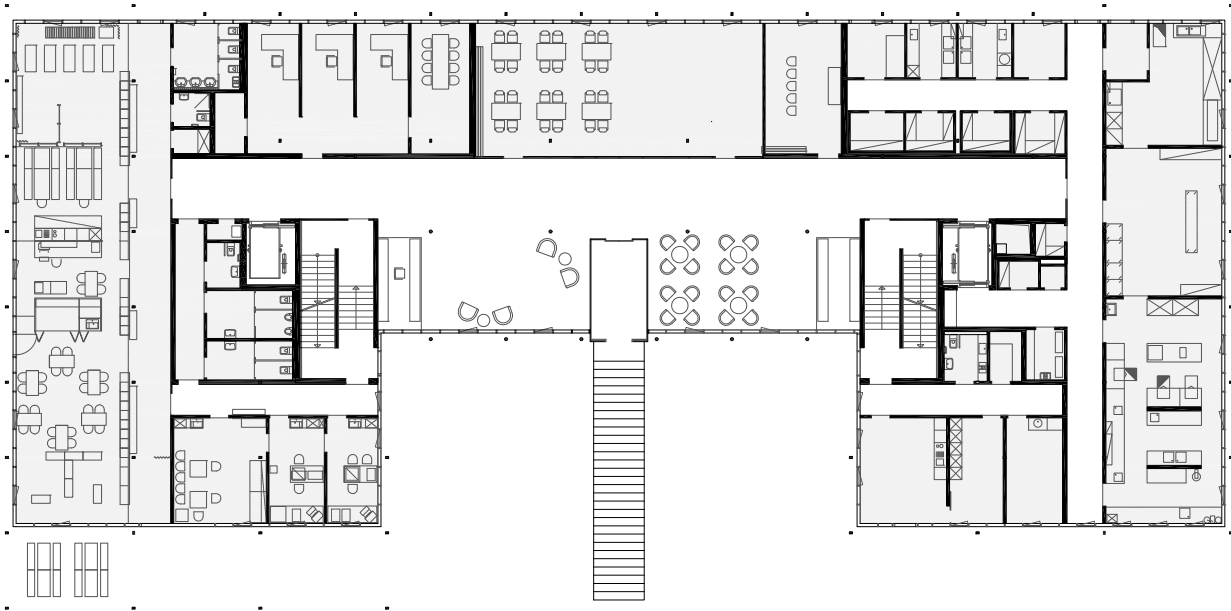


Lageplan

0 5 10 15 m

M 1:4000





Grundriss Erdgeschoss

0 5 10 15 m

M 1:600



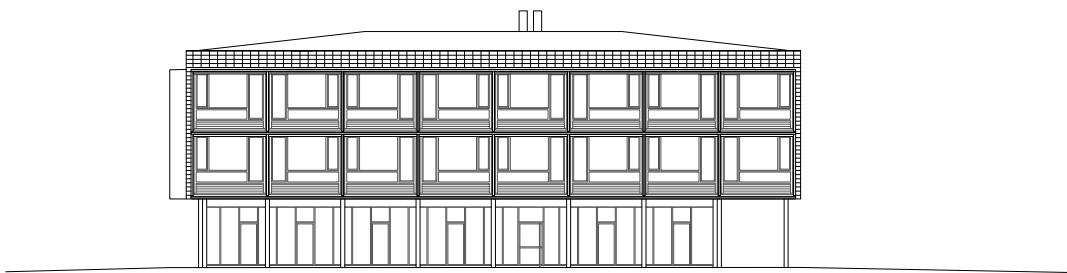
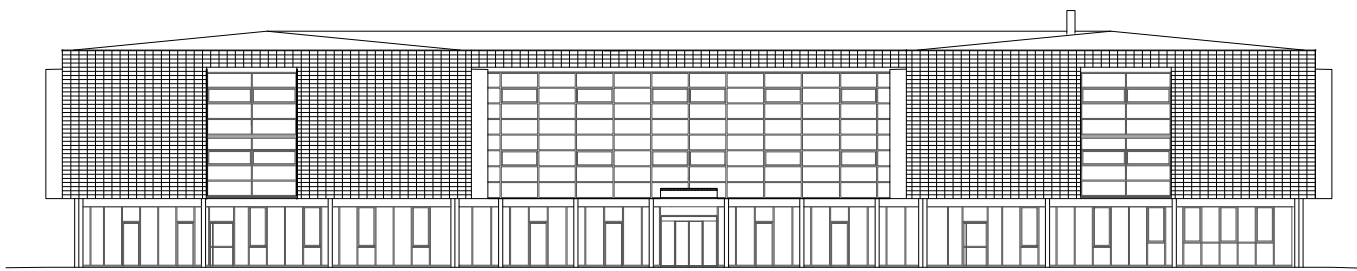


Grundriss 1. und 2. Obergeschoss

0 5 10 15 m

M 1:600





Ansichten

0 5 10 15 m

M 1:600

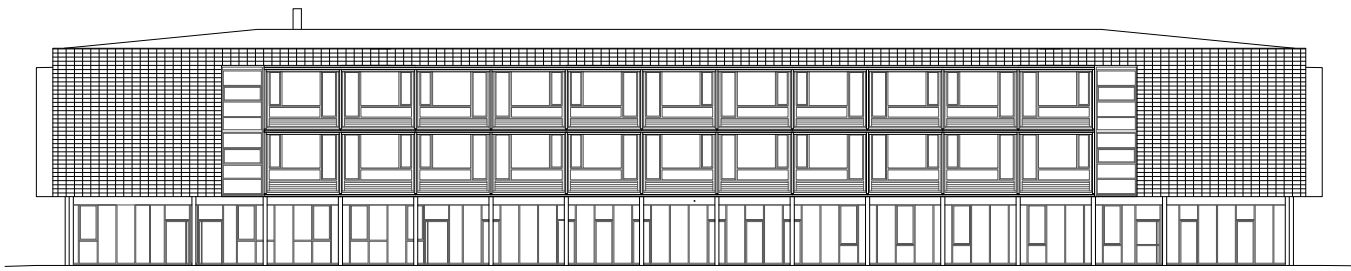


2000

St. Anna Hilfe, Bregenz

Sozialzentrum Mariahilf, Bregenz
ArGe Architekten Hörburger-Küess-Schweitzer

4/6

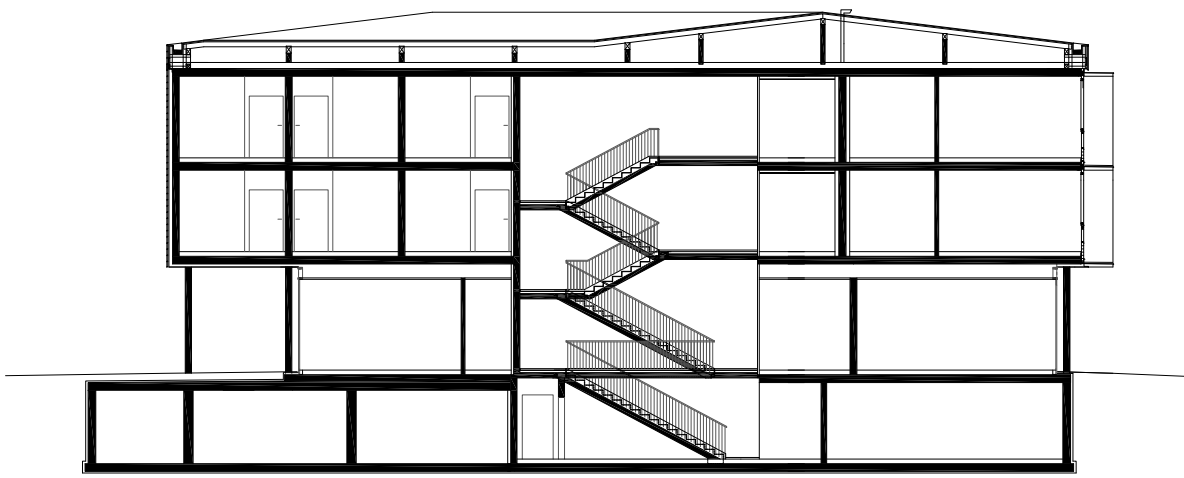


Ansichten

0 5 10 15 m

M 1:600





Schnitt

0 5 10 15 m

M 1:400

