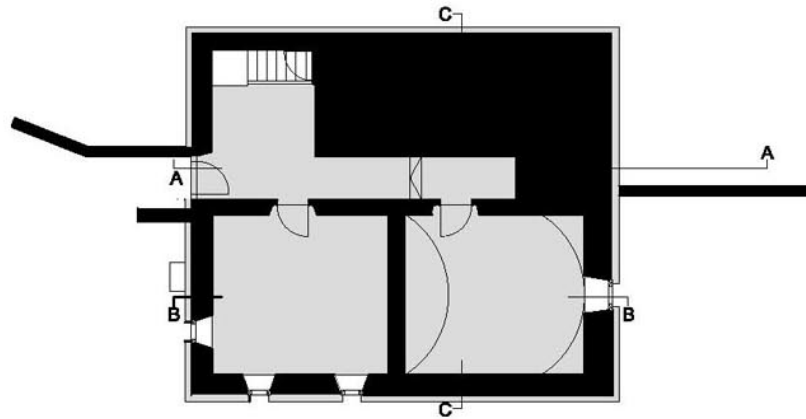


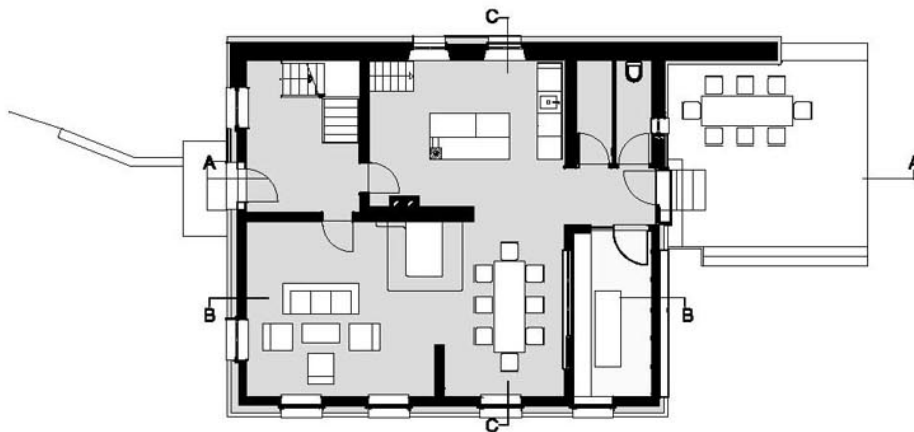
Lageplan - Thuringerberg

0 20 40 60 m



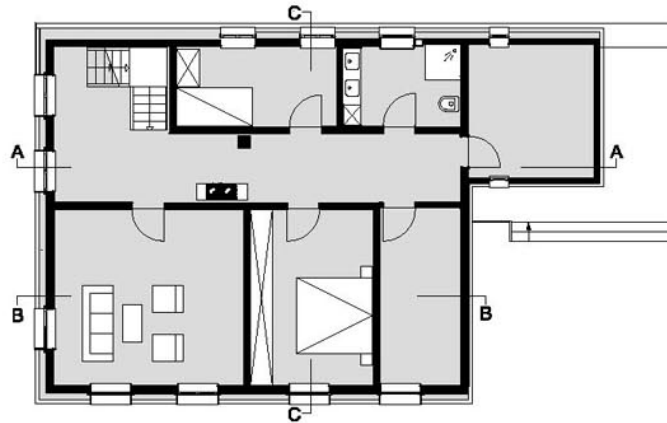


Kellergeschoss

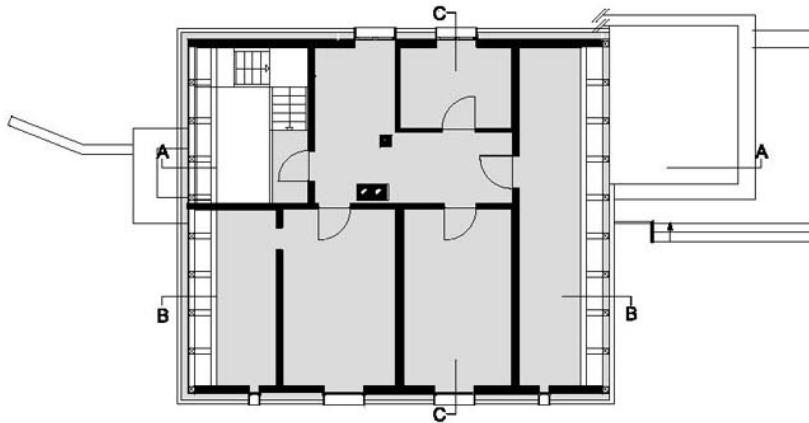


Erdgeschoss





Obergeschoss

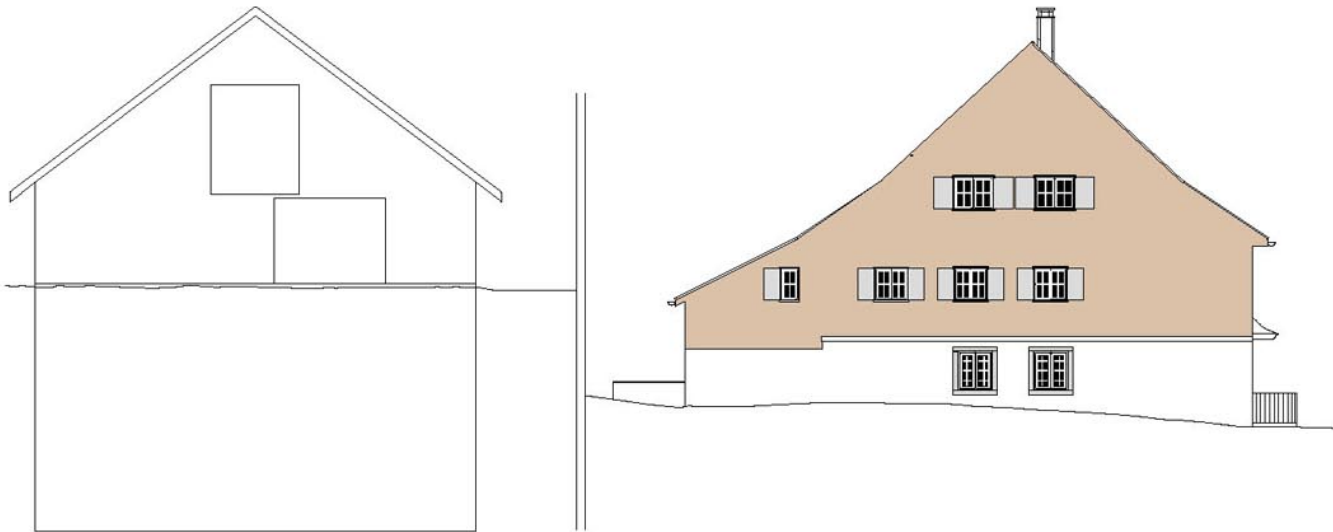


Dachgeschoss



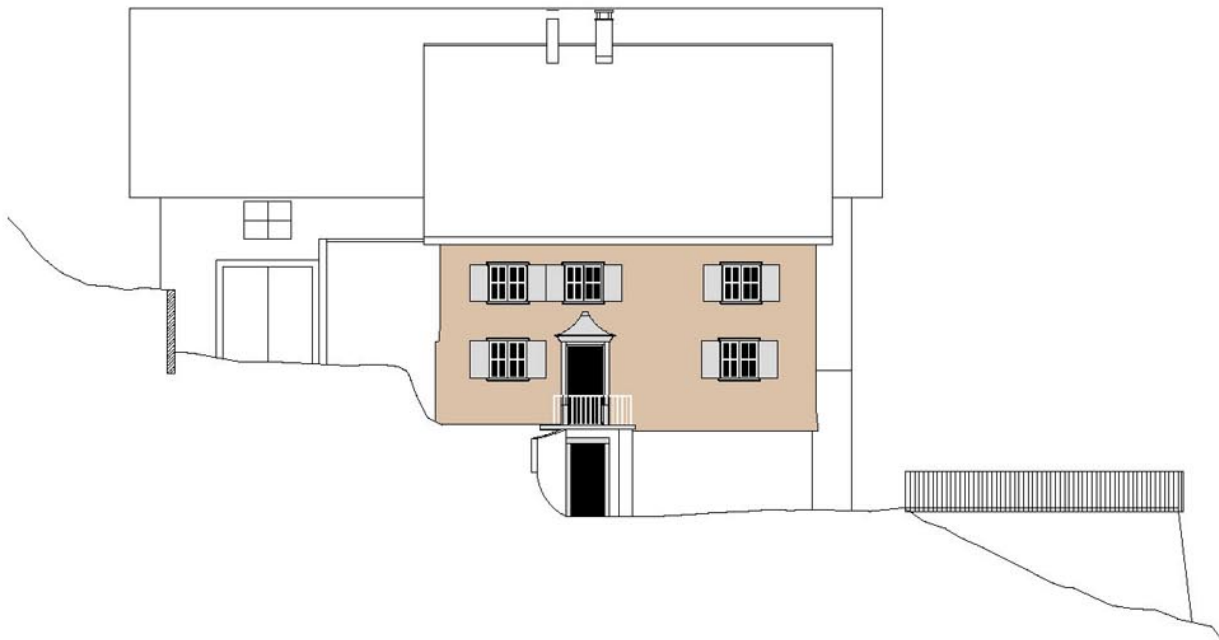


Ansicht Süd

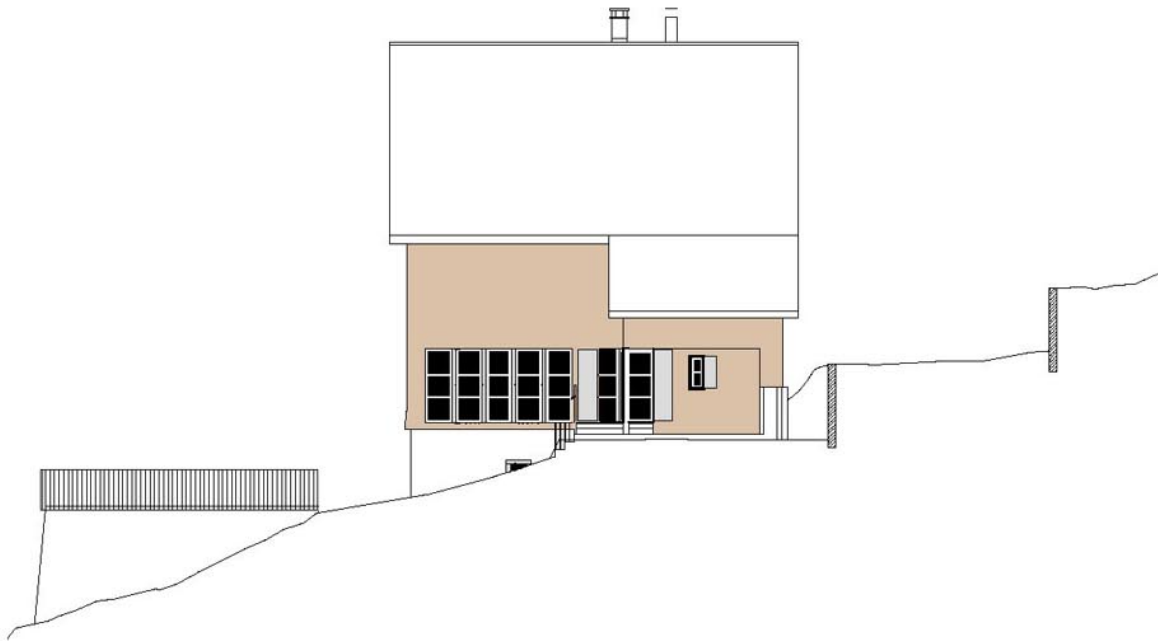


Ansicht Nord

0 2 4 6 m

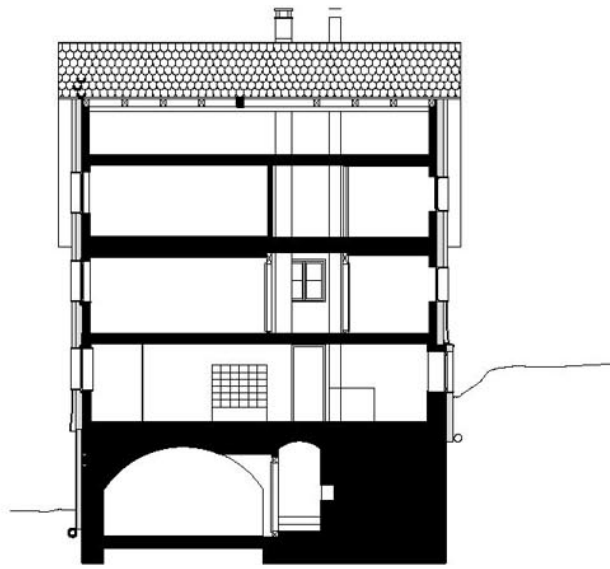


Ansicht Ost



Ansicht West

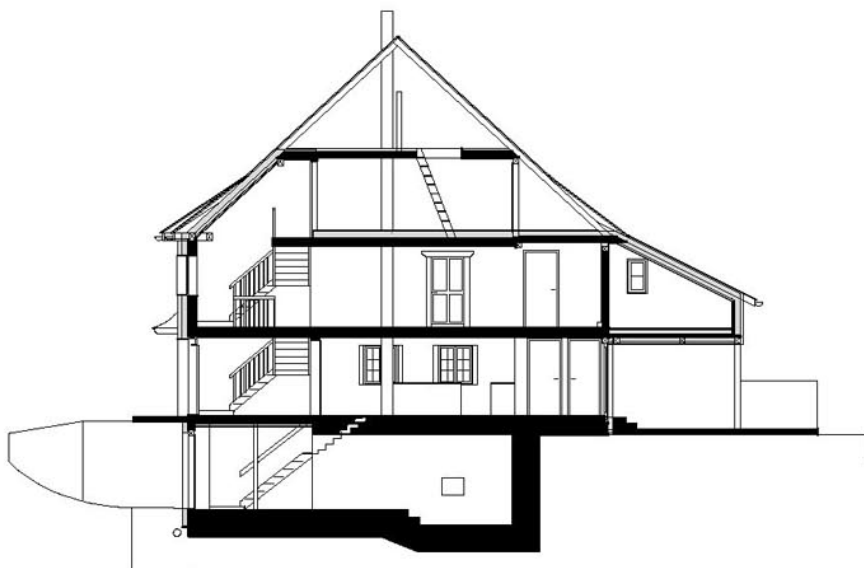
0 2 4 6 m



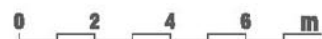
Schnitt C-C



Schnitt B-B



Schnitt A-A





0 2 4 6 m

2008/2011
Thüringerberg

EFH Tonko - Umbau/Sanierung Landwirtschaftliches Anwesen
Architekt Helmut Kuëss Mitarbeit: kgm-architektur kuëss-gruber-mayr



2008/2011
Thüringerberg

EFH Tonko - Umbau/Sanierung Landwirtschaftliches Anwesen
Architekt Helmut Küess Mitarbeit: kgm-architektur kuess-gruber-mayr